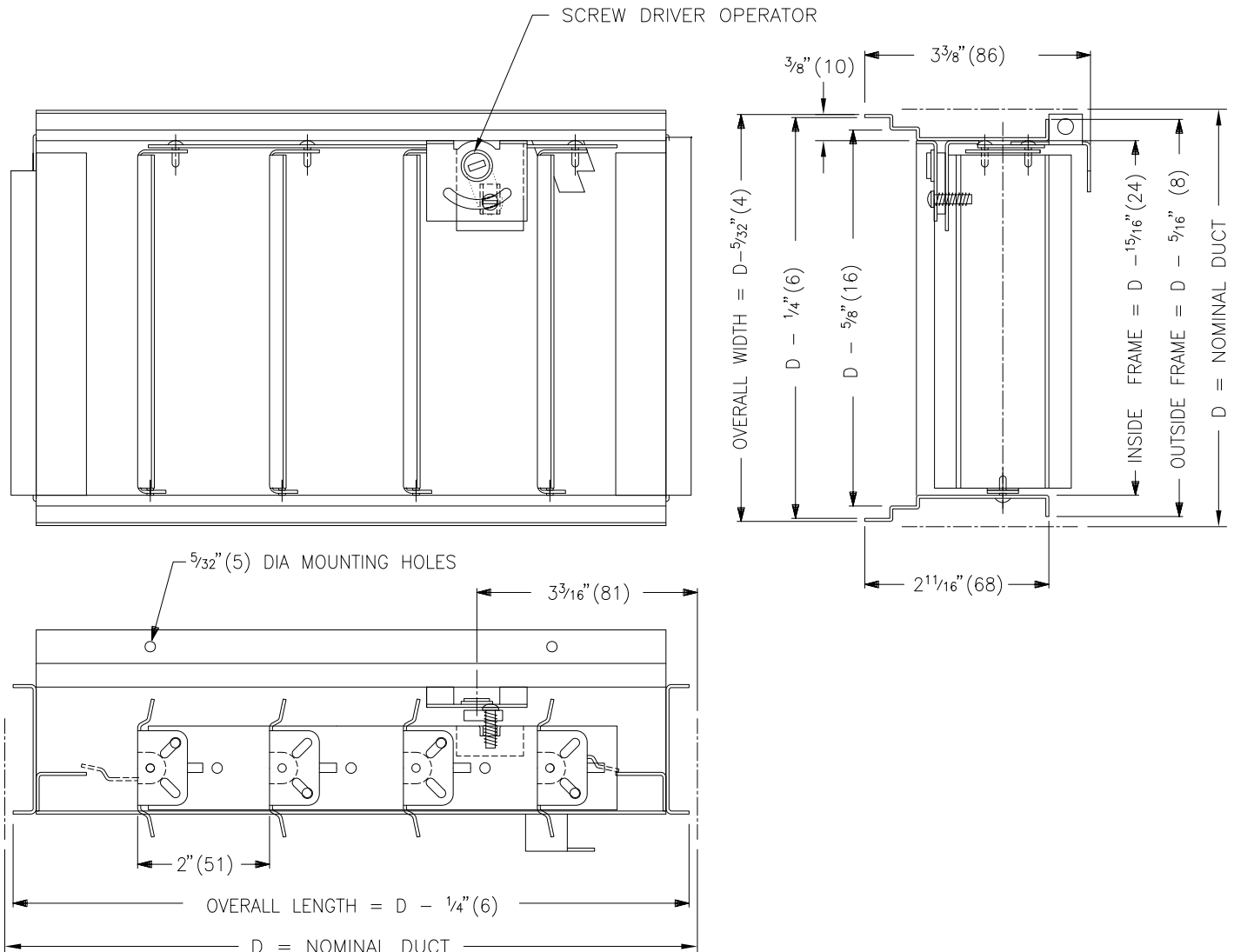


**VCS5 HEAVY DUTY OPPOSED BLADE DAMPER**



**NOTES:**

- MIN. SIZE = 6" X 4" (152X102)
- MAX. SIZE (SINGLE SECTION) = 36" X 24" (914X610)
- LARGER SIZES SUPPLIED IN MULTIPLE SECTIONS WITH A 36" X 24" (914X610) MAX. SECTION SIZE.
- DAMPER BLADE LOCKING MECHANISM IS STANDARD
- SCREW DRIVER OPERATOR IS FACE ACCESSIBLE
- UNITS ARE AVAILABLE IN 1" (25) INCREMENTS ONLY
- FACTORY TOLERANCE:  $\pm 1/32"$  (1)


**MATERIAL:**

- 18 GAUGE .048" (1.2) COLD ROLLED STEEL c/w NON-FERROUS BLADE PIVOTS.

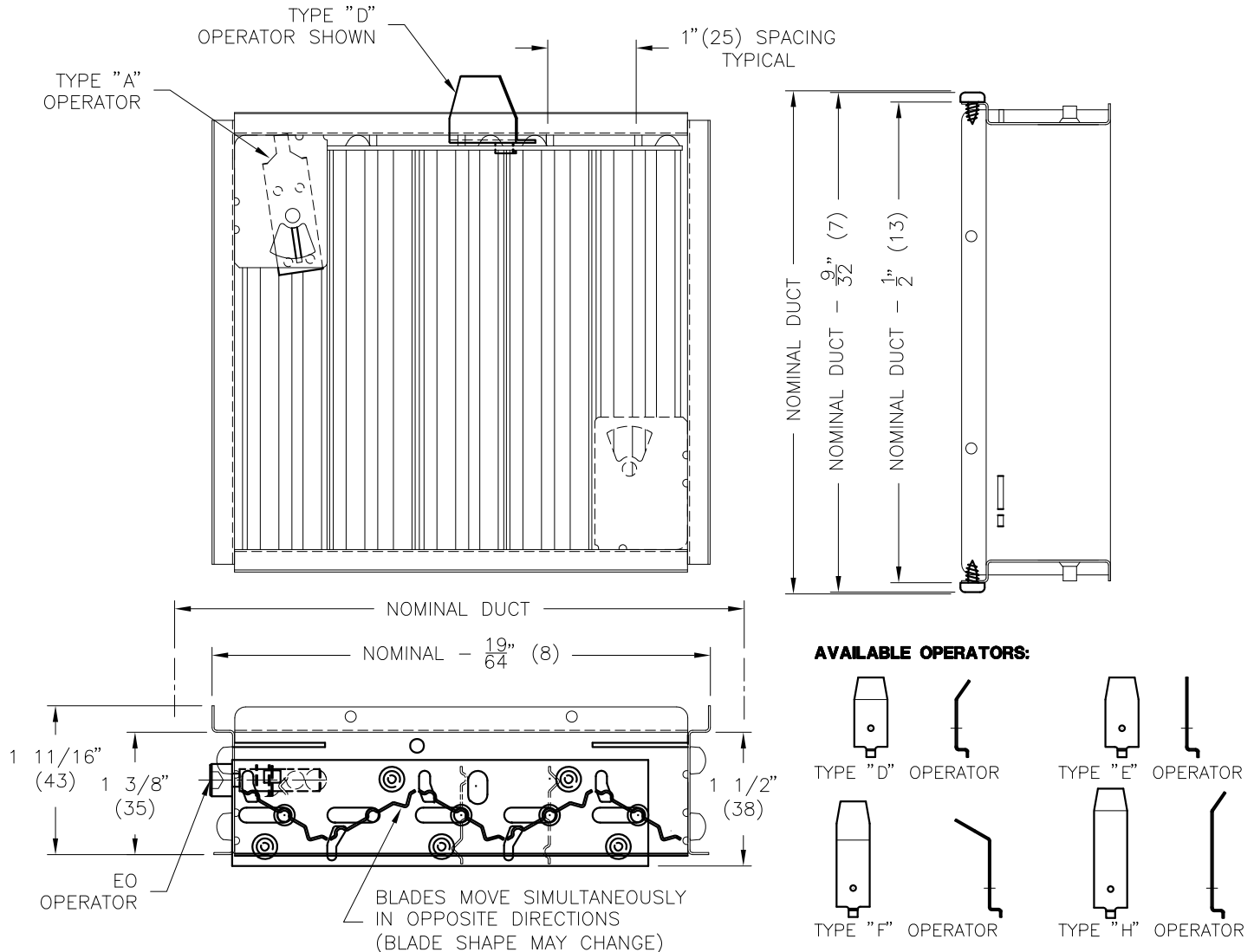
**FINISH:**

- B17 BLACK

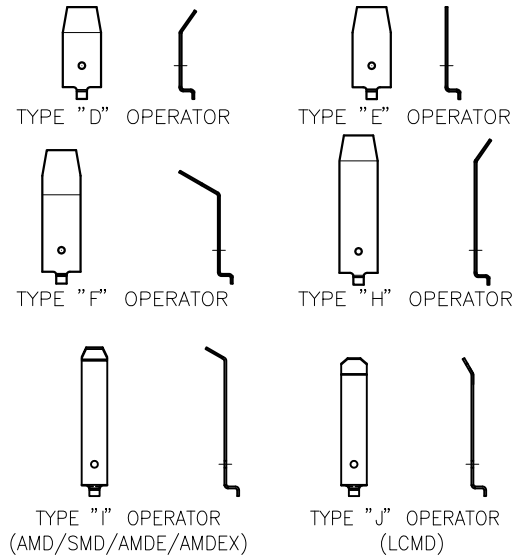
ALL METRIC DIMENSIONS ( ) ARE SOFT CONVERTED. IMPERIAL DIMENSIONS ARE CONVERTED TO METRIC AND ROUNDED TO THE NEAREST MILLIMETER.

<b>PROJECT:</b>		<b>price®</b>	
<b>ENGINEER:</b>			<b>VCS5</b> HEAVY DUTY DAMPER c/w SCREW DRIVER OPERATOR
<b>CUSTOMER:</b>			
<b>SUBMITTAL DATE:</b>	<b>SPEC. SYMBOL:</b>	2012/07/20	

**VCS3 OPPOSED BLADE DAMPER**



**AVAILABLE OPERATORS:**



**NOTES:**

- VCS3 IS USED AS A GRILLE AND DIFFUSER ACCESSORY FOR MOUNTING BEHIND THE OUTLET.
- TYPE A SLOT OPERATOR IS THE STANDARD OPERATOR.
- MINIMUM SIZE = 4"(102) x 2 1/2 "(64)
- MAXIMUM SIZE = 24"(610) x 24"(610)
- UNITS LENGTH (DIMENSION PERPENDICULAR TO BLADE) AVAILABLE IN 1" (25) INCREMENTS ONLY
- UNITS WIDTH (DIMENSION PARALLEL TO BLADE) AVAILABLE IN FRACTIONAL SIZES
- UNITS LARGER THAN MAXIMUM SIZE WILL BE SUPPLIED IN MULTIPLE DAMPER ARRANGEMENTS
- TYPE "A" OPERATOR MIN SIZE = 4"(102) x 3"(76)
- FACTORY TOLERANCE:  $\pm 1/32$ "(1)

**MATERIAL:**

- DAMPER – COATED STEEL CONSTRUCTION

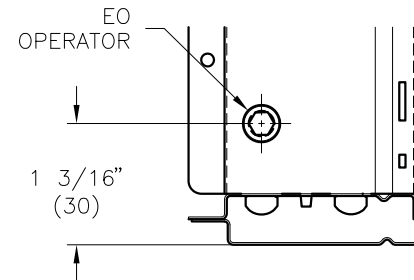
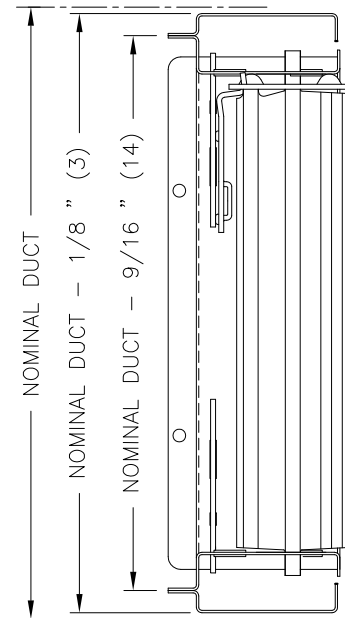
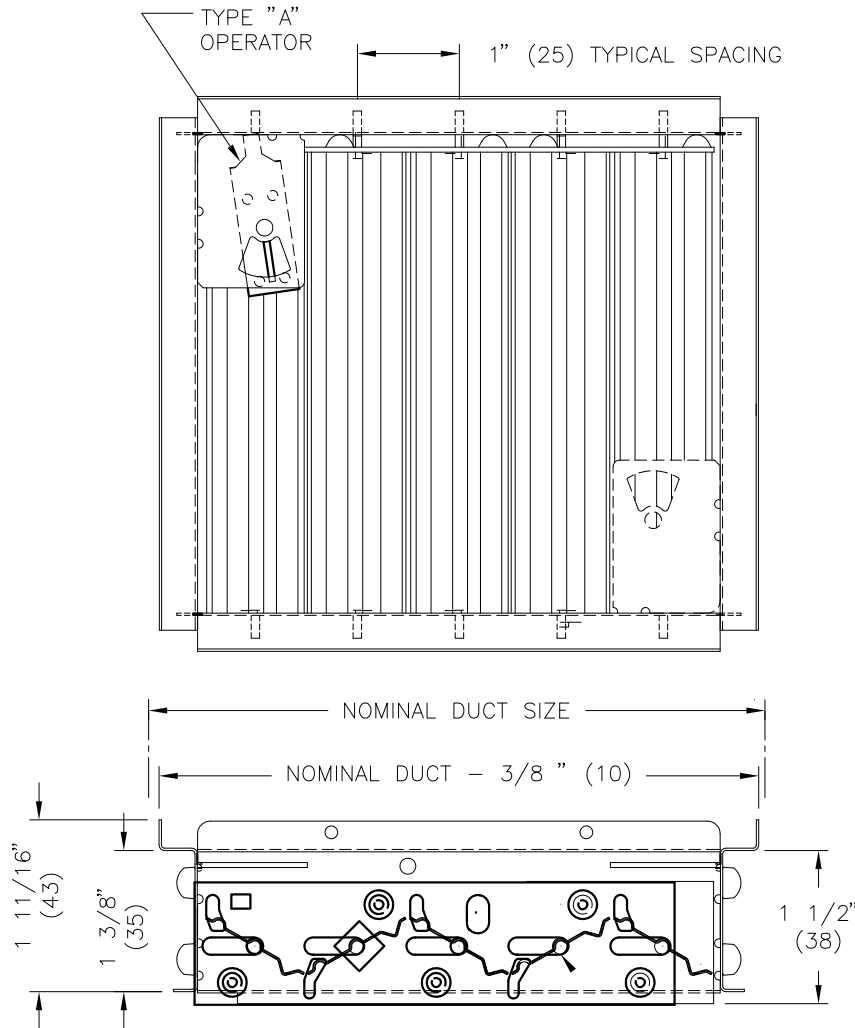
**FINISH:**

- COATED STEEL

ALL METRIC DIMENSIONS ( ) ARE SOFT CONVERTED. IMPERIAL DIMENSIONS ARE CONVERTED TO METRIC AND ROUNDED TO THE NEAREST MILLIMETER.

<b>PROJECT:</b>		<b>PRICE®</b>	
<b>ENGINEER:</b>			
<b>CUSTOMER:</b>		<b>RV</b>	<b>VCS3</b>
<b>SUBMITTAL DATE:</b>		<b>219285</b>	<b>OPPOSED BLADE DAMPER</b>
<b>SPEC. SYMBOL:</b>		<b>2012/07/20</b>	

**VCS3B OPPOSED BLADE VOLUME CONTROLLER**



DETAIL OF VCS3B/EO OPERATOR LOCATION

**NOTES:**

- VCS3B IS FOR INSTALLATION AS A SEPARATE UNIT IN DUCT BEHIND A GRILLE, AND IS SUPPLIED WITH A TYPE A OPERATOR.
- VCS3B/EO IS FOR REMOTE MOUNTING IN A DUCT AS A SEPARATE UNIT, AND IS SUPPLIED WITH AN EO EXTERNAL HEX OPERATOR. EO OPERATOR IS ACCESSABLE THROUGH A ROUND HOLE IN DUCT, ACCESS HOLE IS TO BE PROVIDED BY THE INSTALLER.
- MINIMUM SIZE = 4"(102) x 2 1/2" (64)
- MAXIMUM SIZE = 24"(610) x 24"(610)
- UNITS LENGTH (DIMENSION PERPENDICULAR TO BLADE) AVAILABLE IN 1" (25) INCREMENTS ONLY
- UNITS WIDTH (DIMENSION PARALLEL TO BLADE) AVAILABLE IN FRACTIONAL SIZES
- FACTORY TOLERANCE  $\pm 1/32"$  (1)
- TYPE "A" OPERATOR MIN SIZE = 4"(102) x 3"(76)
- TYPE "EO" OPERATOR MIN SIZE = 4"(102) x 3"(76)

**MATERIAL:**

- DAMPER - STEEL CONSTRUCTION


**FINISH:**

- COATED STEEL

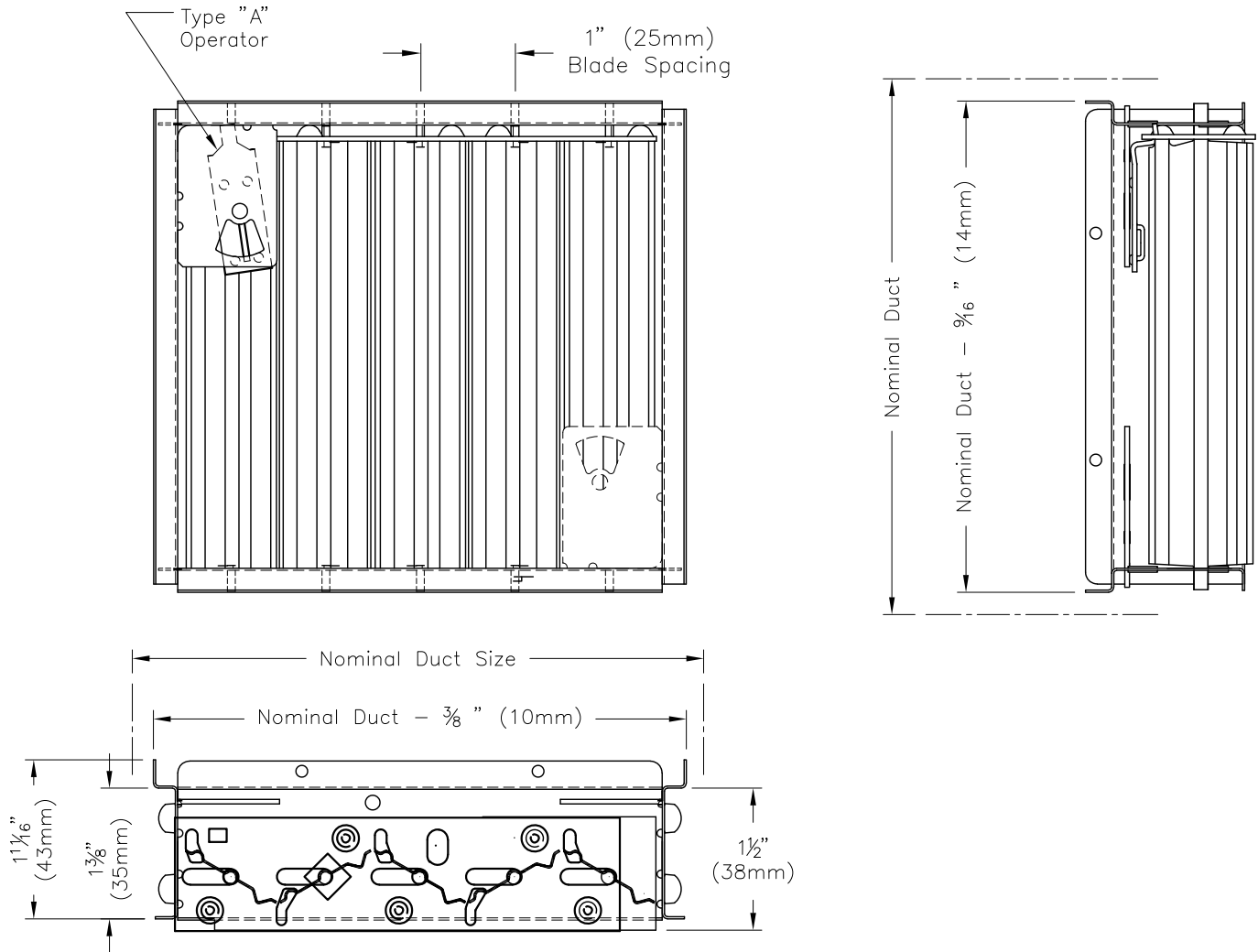
**OPERATOR:**

- ☐ - A OPERATOR
- ☐ - EO EXTERNAL OPERATOR

ALL METRIC DIMENSIONS ( ) ARE SOFT CONVERTED. IMPERIAL DIMENSIONS ARE CONVERTED TO METRIC AND ROUNDED TO THE NEAREST MILLIMETER.

<b>PROJECT:</b>		<b>price®</b>	
<b>ENGINEER:</b>			<b>VCS3B</b>  OPPOSED BLADE VOLUME CONTROLLER
<b>CUSTOMER:</b>		219289	
<b>SUBMITTAL DATE:</b>	<b>SPEC. SYMBOL:</b>	AUG 2012	

**VCS3SS OPPOSED BLADE VOLUME CONTROLLER**



**NOTES:**

- VCS3SS is used as a grille and diffuser accessory for mounting behind the outlet.
- Type "A" slot operator is the standard operator.
- Minimum Size = 4"(102mm) x 3"(76mm)
- Maximum Size = 24"(610mm) x 18"(457mm)
- Unit length (dimension perpendicular to blade) available in 1" (25mm) increments only.
- Unit width (dimension parallel to blade) available in fractional sizes
- Units larger than maximum size will be supplied in multiple damper arrangements
- Factory tolerance  $\pm 1/32"$  (1mm)

**MATERIAL:**

- Stainless steel construction

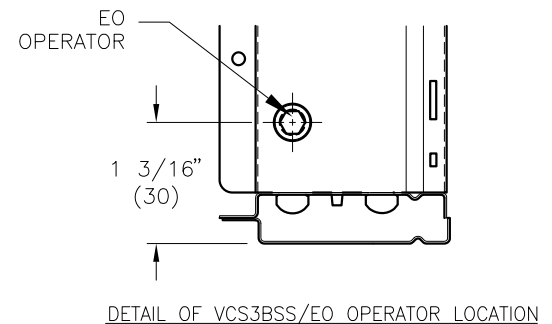
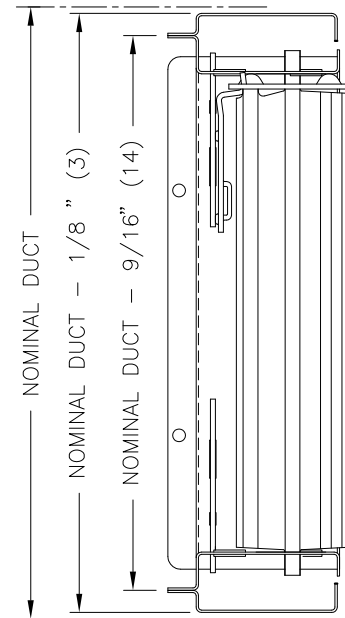
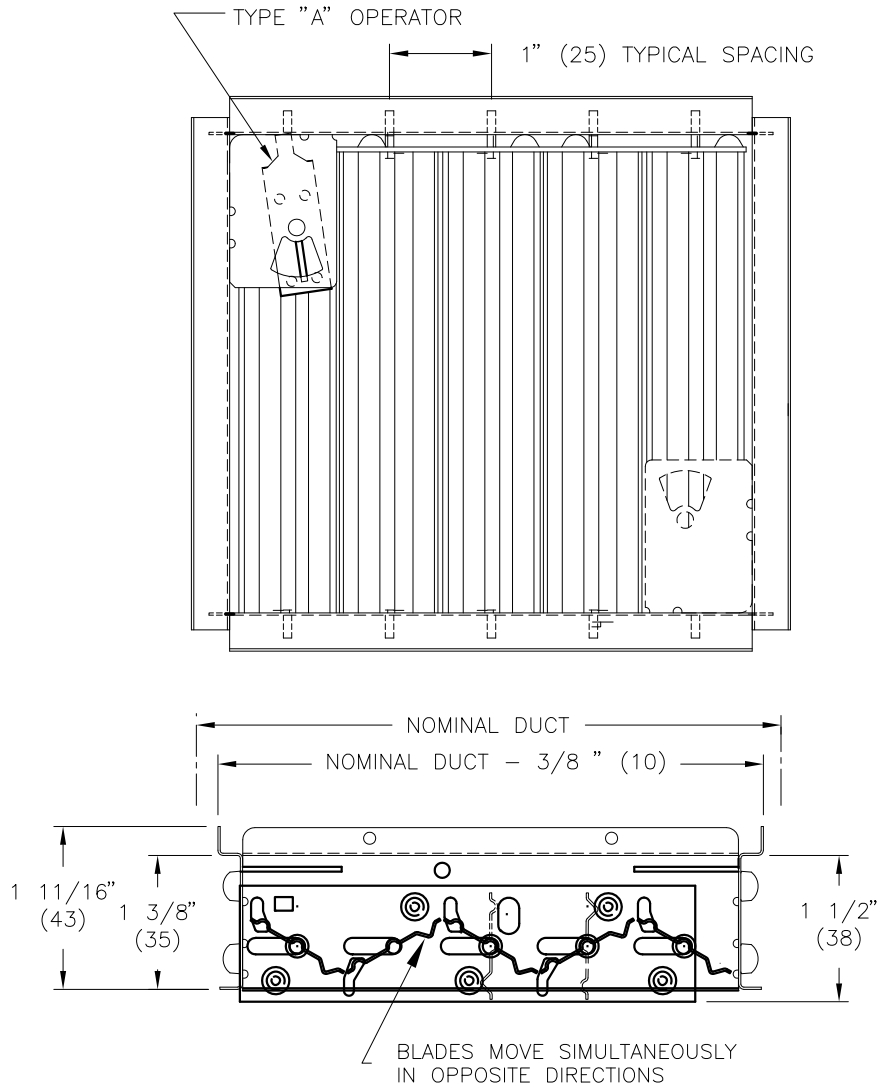
**FINISH:**

- 2B-Mill Stainless Steel

ALL METRIC DIMENSIONS ( ) ARE SOFT CONVERTED. IMPERIAL DIMENSIONS ARE CONVERTED TO METRIC AND ROUNDED TO THE NEAREST MILLIMETER.

PROJECT:		<div>price®</div>	
ENGINEER:		<div>MG</div>	<div>VCS3SS</div> <div>STAINLESS STEEL OPPOSED BLADE VOLUME CONTROLLER</div>
CUSTOMER:		228136	
SUBMITTAL DATE:	SPEC. SYMBOL:	2022/02/14	



**VCS3BSS OPPOSED BLADE VOLUME CONTROLLER**



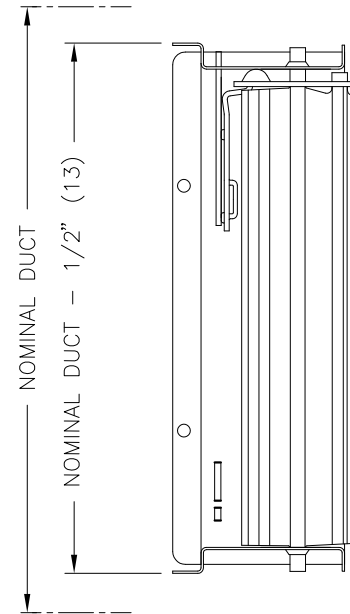
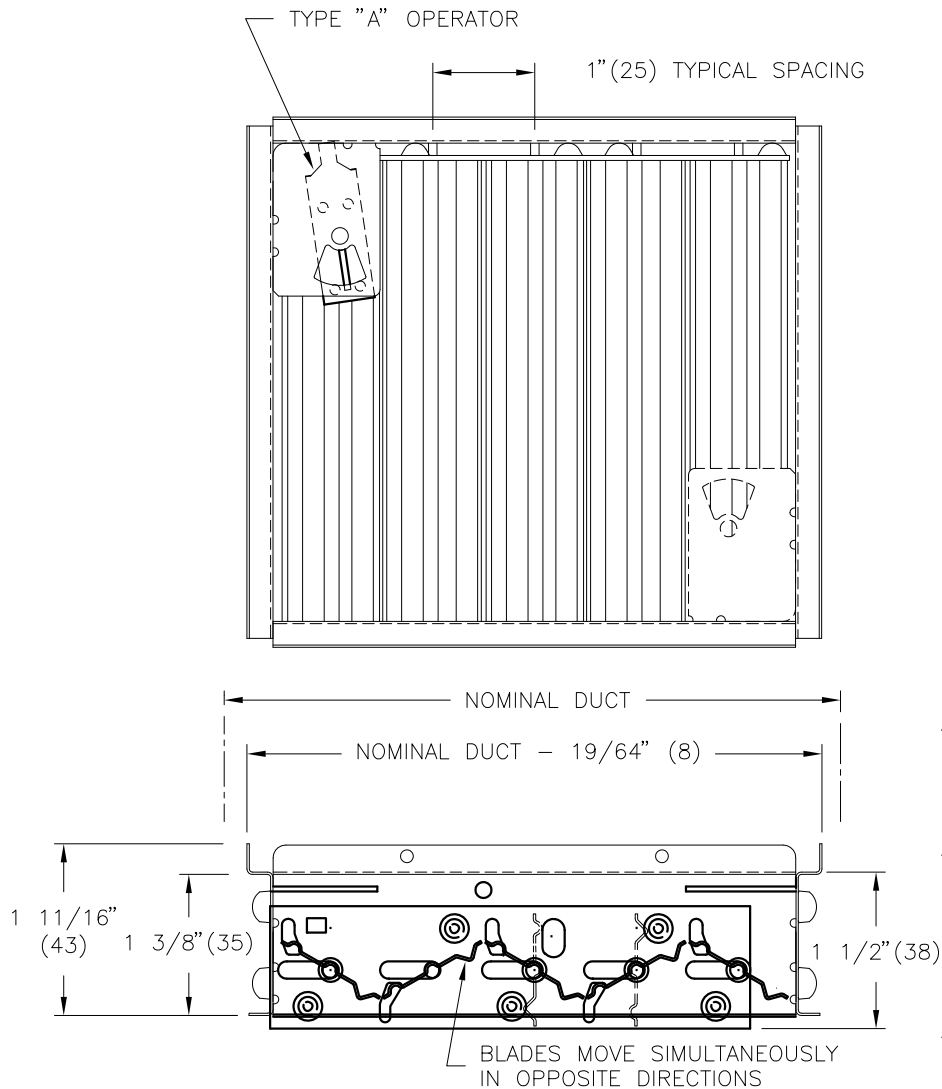
**NOTES:**

- VCS3BSS WITH A OPERATOR IS FOR REMOTE MOUNTING IN A DUCT AS A SEPARATE UNIT IN DUCT BEHIND A GRILLE
- EO OPERATOR IS FOR REMOTE MOUNTING IN A DUCT AS A SEPARATE UNIT, ACCESSIBLE THROUGH A ROUND HOLE IN THE DUCT (ACCESS HOLE BY INSTALLER)
- TYPE "A" OPERATOR MIN SIZE = 4"(102) x 3"(76)
- TYPE "EO" OPERATOR MIN SIZE = 4"(102) x 3"(76)
- MINIMUM SIZE = 4"(102) x 2 1/2"(64)
- MAXIMUM SIZE = 24"(610) x 18"(457)
- UNITS LENGTH (DIMENSION PERPENDICULAR TO BLADE) AVAILABLE IN 1" (25) INCREMENTS ONLY
- UNITS WIDTH (DIMENSION PARALLEL TO BLADE) AVAILABLE IN FRACTIONAL SIZES
- FACTORY TOLERANCE  $\pm 1/32"$  (1)

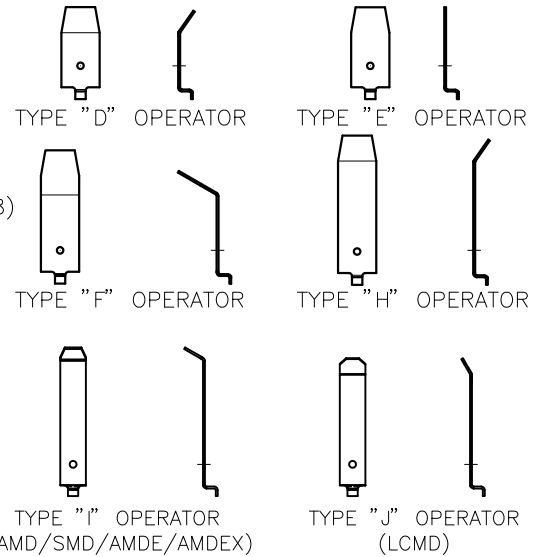
ALL METRIC DIMENSIONS ( ) ARE SOFT CONVERTED. IMPERIAL DIMENSIONS ARE CONVERTED TO METRIC AND ROUNDED TO THE NEAREST MILLIMETER.

<b>PROJECT:</b>			
<b>ENGINEER:</b>			<b>VCS3BSS</b> STAINLESS STEEL OPPOSED BLADE VOLUME CONTROLLER
<b>CUSTOMER:</b>		228137	
<b>SUBMITTAL DATE:</b>	<b>SPEC. SYMBOL:</b>	2012/07/20	

**VCS3AL OPPOSED BLADE DAMPER**



**AVAILABLE OPERATORS:**



**NOTES:**

- VCS3AL IS USED AS A GRILLE AND DIFFUSER ACCESSORY FOR MOUNTING BEHIND THE OUTLET.
- TYPE A SLOT OPERATOR IS THE STANDARD OPERATOR.
- MINIMUM SIZE = 4"(102) x 2 1/2"(64)
- MAXIMUM SIZE = 24"(610) x 18"(457)
- UNITS LENGTH (DIMENSION PERPENDICULAR TO BLADE) AVAILABLE IN 1" (25) INCREMENTS ONLY
- UNITS WIDTH (DIMENSION PARALLEL TO BLADE) AVAILABLE IN FRACTIONAL SIZES
- UNITS LARGER THAN MAXIMUM SIZE WILL BE SUPPLIED IN MULTIPLE DAMPER ARRANGEMENTS
- TYPE "A" OPERATOR MIN SIZE = 4"(102) x 3"(76)
- FACTORY TOLERANCE  $\pm 1/32"$  (1)

**MATERIAL:**

- ALUMINUM FRAME AND BLADES
- COATED STEEL MOVEMENT BAR, OPERATOR AND MISCELLANEOUS HARDWARE

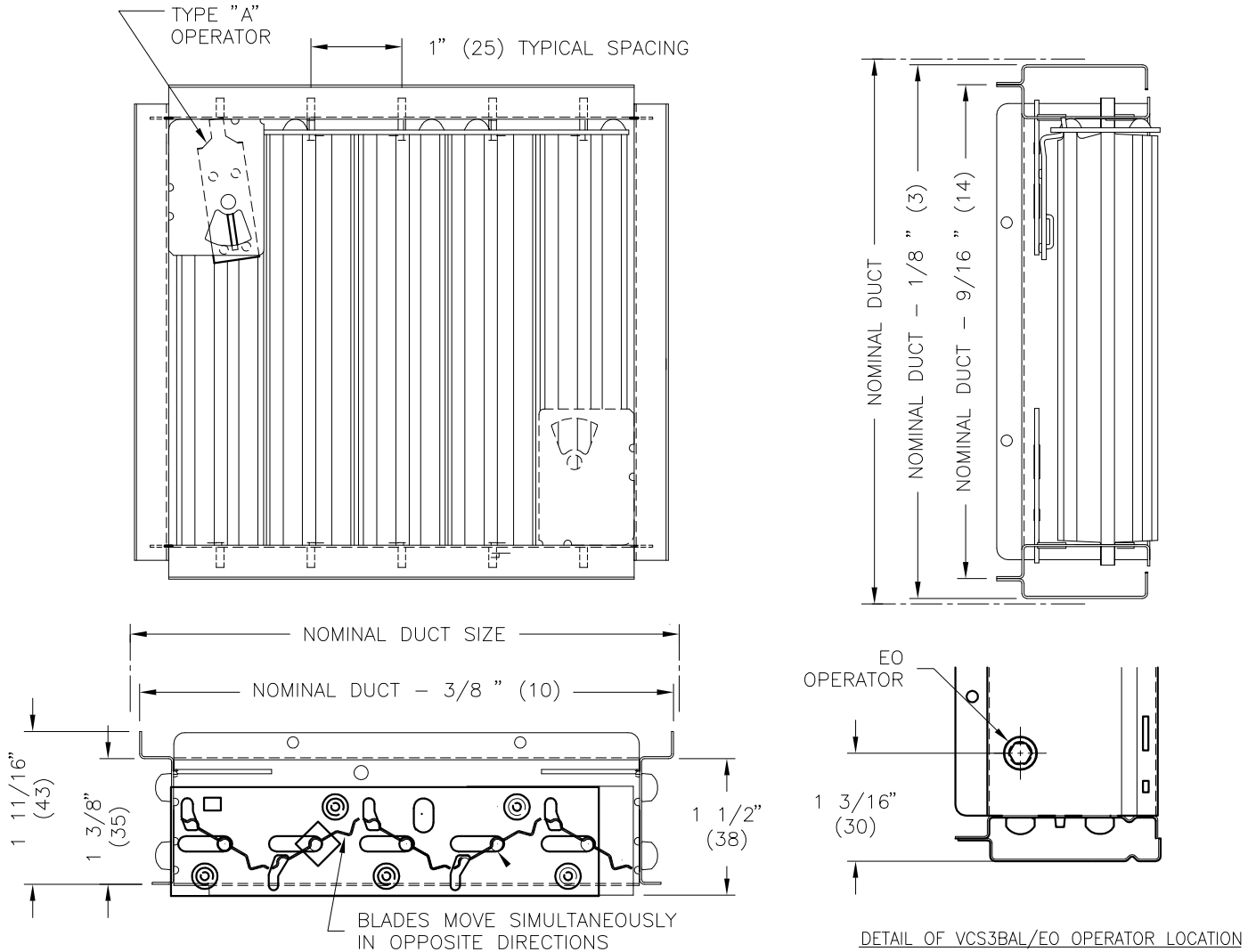
**FINISH:**

- MILL FINISH

ALL METRIC DIMENSIONS ( ) ARE SOFT CONVERTED. IMPERIAL DIMENSIONS ARE CONVERTED TO METRIC AND ROUNDED TO THE NEAREST MILLIMETER.

PROJECT:		price®	
		RV	VCS3AL  OPPOSED BLADE DAMPER
ENGINEER:		228696	
CUSTOMER:			
SUBMITTAL DATE:	SPEC. SYMBOL:	2012/07/20	

**VCS3BAL OPPOSED BLADE VOLUME CONTROLLER**



**NOTES:**

- VCS3BAL IS FOR INSTALLATION AS A SEPARATE UNIT IN DUCT BEHIND A GRILLE, AND IS SUPPLIED WITH A TYPE A OPERATOR.
- VCS3BAL/EO IS FOR REMOTE MOUNTING IN A DUCT AS A SEPARATE UNIT, AND IS SUPPLIED WITH AN EO EXTERNAL HEX OPERATOR. EO OPERATOR IS ACCESSABLE THROUGH A ROUND HOLE IN DUCT, ACCESS HOLE IS TO BE PROVIDED BY THE INSTALLER.
- MINIMUM SIZE = 4"(102) x 2½"(64)
- MAXIMUM SIZE = 24"(610) x 18"(457)
- UNITS LENGTH (DIMENSION PERPENDICULAR TO BLADE) AVAILABLE IN 1" (25) INCREMENTS ONLY
- UNITS WIDTH (DIMENSION PARALLEL TO BLADE) AVAILABLE IN FRACTIONAL SIZES
- TYPE "A" OPERATOR MIN SIZE = 4"(102) x 3"(76)
- TYPE "EO" OPERATOR MIN SIZE = 4"(102) x 3"(76)
- FACTORY TOLERANCE ± 1/32" (1)

ALL METRIC DIMENSIONS ( ) ARE SOFT CONVERTED. IMPERIAL DIMENSIONS ARE CONVERTED TO METRIC AND ROUNDED TO THE NEAREST MILLIMETER.

**MATERIAL:**


- ALUMINUM FRAME AND BLADES
- COATED STEEL MOVEMENT BAR, OPERATOR BRACKET AND MISCELLANEOUS HARDWARE

**FINISH:**

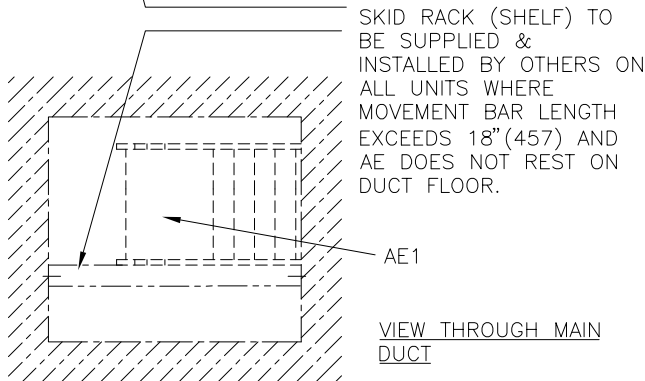
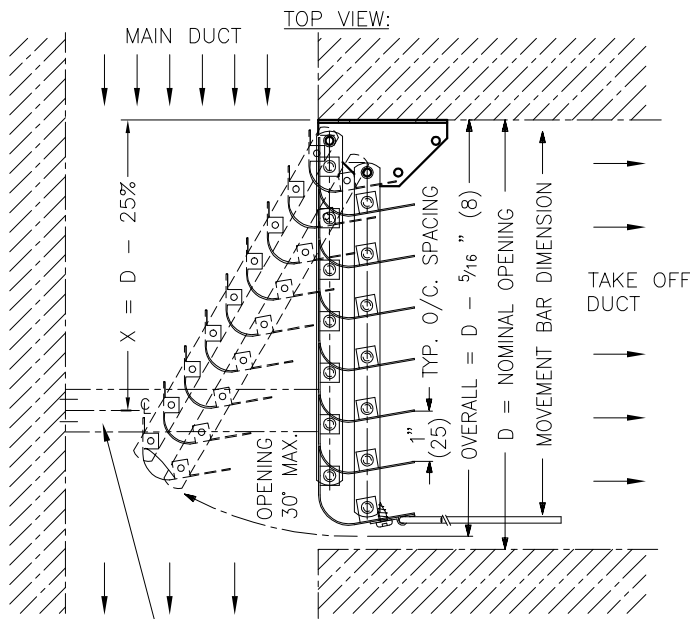
- MILL FINISH

**OPTIONS:**

- ☐ - A OPERATOR
- ☐ - EO EXTERNAL OPERATOR

<b>PROJECT:</b>		<b>price®</b>	
<b>ENGINEER:</b>		 <b>228697</b> <b>2013/01/31</b>	<b>VCS3BAL</b>  OPPOSED BLADE VOLUME CONTROLLER
<b>CUSTOMER:</b>			
<b>SUBMITTAL DATE:</b>	<b>SPEC. SYMBOL:</b>		

**AE1 AIR VOLUME EXTRACTOR**



**SIZE LIMITATIONS:**

MINIMUM BLADE LENGTH = 3" (76)  
MINIMUM MOVEMENT BAR = 6" (152)

**MAXIMUM SIZE LIMITS:**

OPERATOR TYPE	MAXIMUM MOVEMENT BAR	MAXIMUM BLADE LENGTH	MAXIMUM AREA
1 - OR NONE SUPPLIED	36 (914)	36 (914)	4 SQ. FT.
3	30 (762)	16 (406)	2 SQ. FT.
4	60 (1524)	36 (914)	6 SQ. FT.

**FINISH:**

- B17 BLACK

**MATERIAL:**

- STEEL CONSTRUCTION

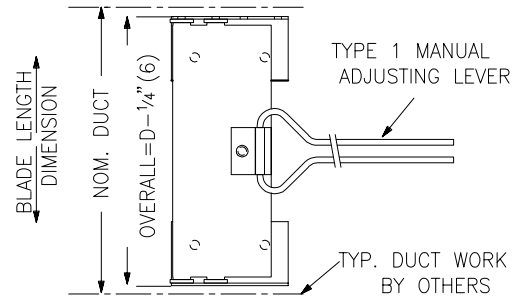
**OPERATOR OPTIONS:**

☐ **NO OPERATOR**

NO OPERATOR SUPPLIED.

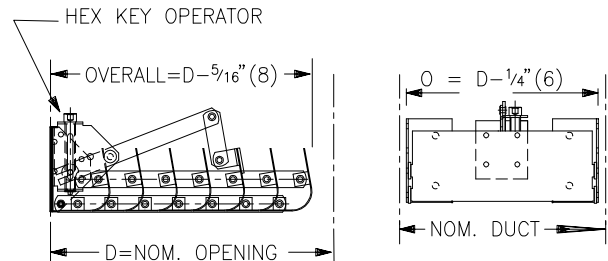
☐ **TYPE 1** MANUAL ADJUSTING LEVER

NOTE: TWO LEVERS ARE SUPPLIED WHEN BLADE LENGTH EXCEEDS 16" (406).



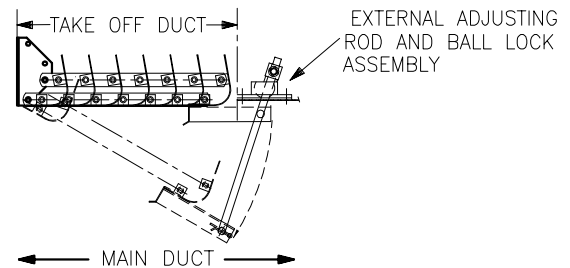
☐ **TYPE 3** HEX KEY OPERATOR

(ACCESSIBLE THROUGH THE FACE OF GRILLE)



☐ **TYPE 4** EXTERNAL ADJUSTING ROD

NOTE: 2 - ADJUSTING RODS ARE SUPPLIED WHEN BLADE LENGTH EXCEEDS 24" (610).



**NOTES:**

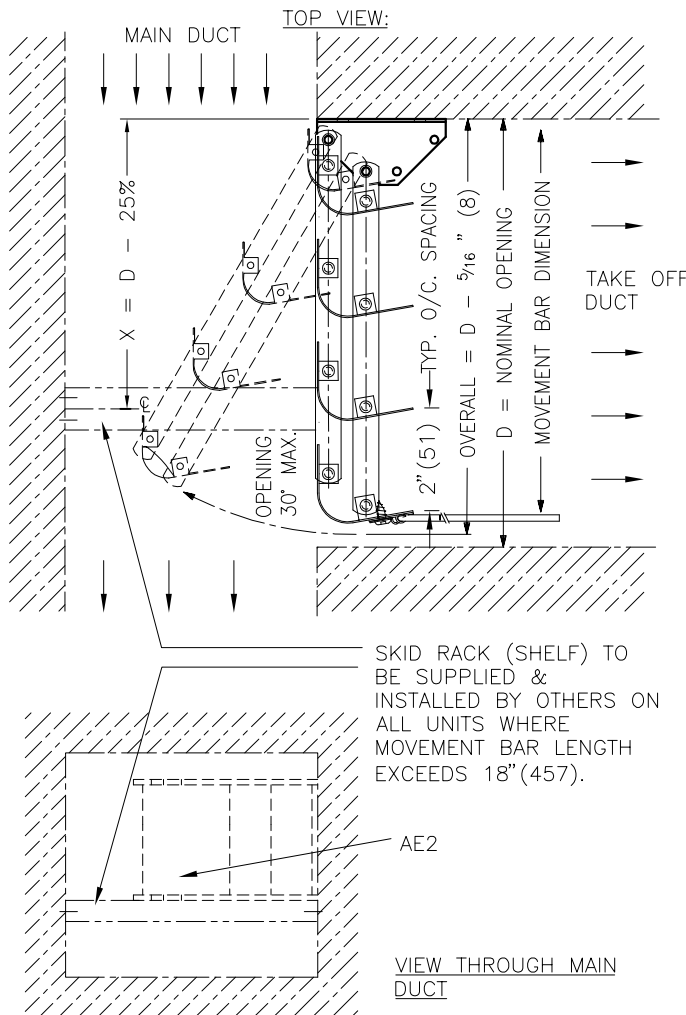
- THE SIZE OF EXTRACTOR MUST NOT EXCEED ANY OF THE LIMITATIONS LISTED ABOVE.
- THE TYPE 4 OPERATOR SHOULD BE USED WHEN EXTRACTOR AREA EXCEEDS 4 - SQ. FT.
- SPECIFY BLADES RUNNING IN LONG (L) OR SHORT (S) DIMENSION WHEN ORDERING
- FACTORY TOLERANCE:  $\pm 1/32$ " (1)
- SEE INSTALLATION INSTRUCTION I100052

ALL METRIC DIMENSIONS ( ) ARE SOFT CONVERTED. IMPERIAL DIMENSIONS ARE CONVERTED TO METRIC AND ROUNDED TO THE NEAREST MILLIMETER.

<b>PROJECT:</b>		<b>price®</b>	
<b>ENGINEER:</b>		<i>mg</i>	<b>AE1</b>
<b>CUSTOMER:</b>		210491	AIR VOLUME EXTRACTOR
<b>SUBMITTAL DATE:</b>	<b>SPEC. SYMBOL:</b>	2013/12/23	



**AE2 AIR VOLUME EXTRACTOR**



**SIZE LIMITATIONS:**

MINIMUM BLADE LENGTH = 3" (76)  
MINIMUM MOVEMENT BAR = 6" (152)

**MAXIMUM SIZE LIMITS:**

OPERATOR TYPE	MAXIMUM MOVEMENT BAR	MAXIMUM BLADE LENGTH	MAXIMUM AREA
1 - OR NONE SUPPLIED	36 (914)	36 (914)	4 SQ. FT.
3	30 (762)	16 (406)	2 SQ. FT.
4	60 (1524)	36 (914)	8 SQ. FT.

**FINISH:**

- B17 BLACK

**MATERIAL:**

- STEEL CONSTRUCTION

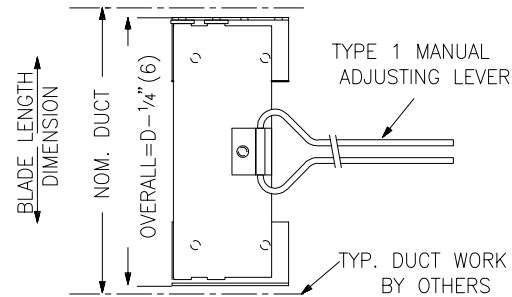
**OPERATOR OPTIONS:**

☐ **NO OPERATOR**

NO OPERATOR SUPPLIED.

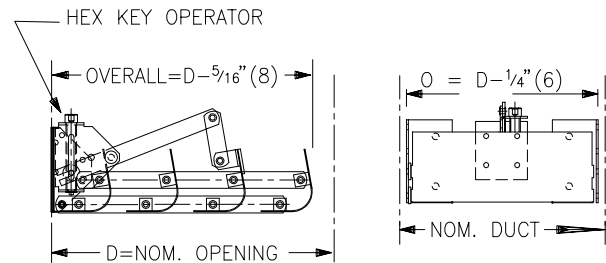
☐ **TYPE 1** MANUAL ADJUSTING LEVER

NOTE: TWO LEVERS ARE SUPPLIED WHEN BLADE LENGTH EXCEEDS 16" (406).



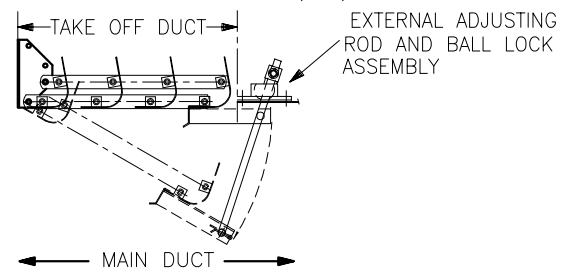
☐ **TYPE 3** HEX KEY OPERATOR

(ACCESSIBLE THROUGH THE FACE OF GRILLE)



☐ **TYPE 4** EXTERNAL ADJUSTING ROD

NOTE: 2 - ADJUSTING RODS ARE SUPPLIED WHEN BLADE LENGTH EXCEEDS 24" (610).



**NOTES:**

- THE SIZE OF EXTRACTOR MUST NOT EXCEED ANY OF THE LIMITATIONS LISTED ABOVE.
- THE TYPE 4 OPERATOR SHOULD BE USED WHEN EXTRACTOR AREA EXCEEDS 4 - SQ. FT.
- SPECIFY BLADES RUNNING IN LONG (L) OR SHORT (S) DIMENSION WHEN ORDERING
- FACTORY TOLERANCE:  $\pm 1/32$ " (1)
- SEE INSTALLATION INSTRUCTION I100052

ALL METRIC DIMENSIONS ( ) ARE SOFT CONVERTED. IMPERIAL DIMENSIONS ARE CONVERTED TO METRIC AND ROUNDED TO THE NEAREST MILLIMETER.

**PROJECT:**

**ENGINEER:**

**CUSTOMER:**

**SUBMITTAL DATE:**

**SPEC. SYMBOL:**

**price®**

*mg*  
210492

2013/12/23

**AE2**

AIR VOLUME EXTRACTOR